



## MESSAGE FROM THE PRESIDENT/CEO

# An important year for your co-op



Glenn W. Miller  
PRESIDENT/CEO

**2022** will be an extremely busy year for your electric cooperative.

Our infrastructure includes over 2,300 miles of line, 18 substations, and 44,000 poles, and it's critical to strategically plan for the maintenance and improvement of that infrastructure. Additionally, in the past few years, we have seen a booming economy in our southern service territory. To meet the continual needs of the growth of our community, the construction of new services has become a significant portion of

our operations management, as well.

On the following pages you will note the tree-trimming and vegetation management plans for this year. Davey Tree company was awarded the bid for tree-trimming, and Protec Terra will be applying necessary spray in the rights-of-way. Each substation area of your cooperative is trimmed and sprayed in a four-year cycle to reduce tree-contact-related outages. You, as a member, can help by contacting us if you see a leaning tree or dead tree near our lines, as high winds can often cause these scenarios. You can also assist by not planting trees near our power lines. We love the beauty of our rural area too, but we all like our electricity to be flowing with no interruptions. Trees are the number one reason for power outages. So please remember to plant trees to shade your home, not our lines.

This summer, Holmes-Wayne will have a new substation completed in the Winesburg area and has started ground preparation for a Holmesville substation. Both are being built to support the recent growth of industrial loads in these areas.

We also look forward to rebuilding 2.4 miles of three-phase and 22.1 miles of single-phase lines this year, for a total of \$1.3 million. The cooperative utilizes many resources to evaluate our distribution system and analyze lines that need replaced due to increased loads or aged material. As in previous years, we also know unexpected additions or upgrades can take place.

## HWEC 2022 OPERATIONS PLAN



**382 miles**

Tree-trimming

- Clear Creek
- Golden Corners
- Mohican
- North Wayne
- West Salem

**394 miles**

Vegetation  
management

- Alpine
- Hefferline
- Moreland
- Sugar Creek
- Trail



**Construction of  
2 substations**

- Holmesville
- Winesburg



You may notice some of our utility poles having a red marking on them. That is as result of 3,883 poles in the Sugarcreek and West Salem substation areas that will be inspected this year. Any poles marked for replacement will be planned for the coming year.

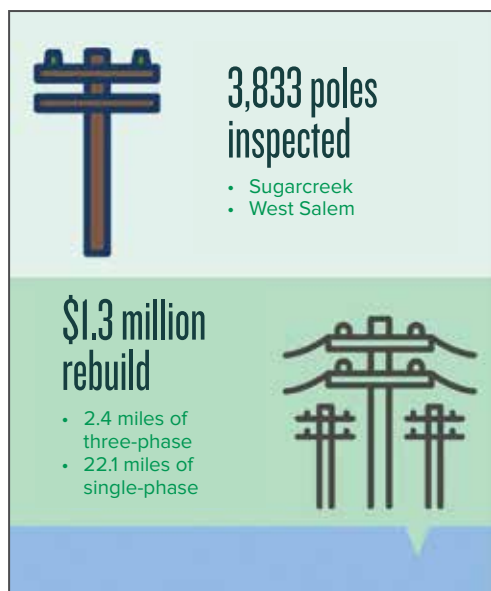
Like everyone, we have seen the increased cost in material in our industry, but we continue to be strong stewards of your cooperative. A staff with a dedicated, strong work ethic that properly manages resources and time is critical to cost management and the overall success of the organization.

*Continued on page 20*



## HOLMES-WAYNE ELECTRIC COOPERATIVE LOCAL PAGES

Continued from page 19



You, the members, are also a key component to cost management. Every month you read your meter, preventing the need for a staff member and truck to read our over 17,700 meters in eight counties. Additionally, this allows you to see the exact amount of electricity you have consumed in the past month, prepare your budget for the next month, and contact us if you would like assistance with reducing your energy consumption or to utilize programs like budget billing.

Cooperatives are so much more than a member-owned utility. We work as team to help keep rates affordable and power reliable for you and your neighbors. It's a business model that has been successful in many industries, and for Holmes-Wayne Electric Cooperative, for over 86 years!



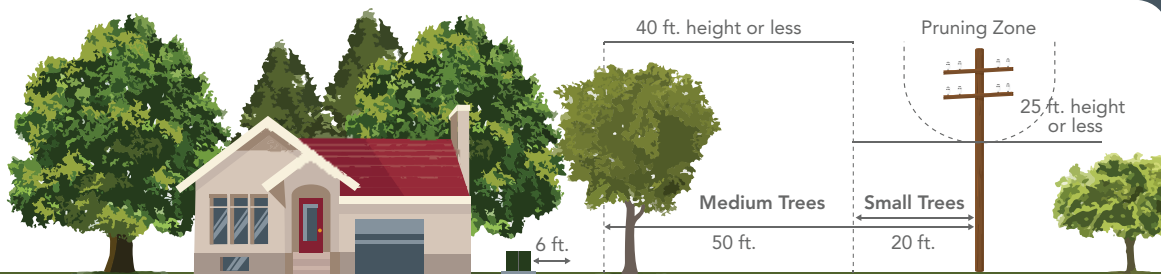
## Help keep yourself and our staff safe!

If flags and stakes have been placed on your property for upcoming work, please do not move them. These flags indicate where utilities are buried or will be placed. These are needed to safeguard the equipment and prevent possible service interruptions. When the work has been completed, the stakes and flags will be removed. Help keep our staff safe!

Just like us, if you're planning a project that requires digging or excavation work, make sure you know where

your underground utility lines are located. Accidentally hitting utility lines can be costly and dangerous. Help keep yourself safe!

Before you dig, call the Ohio Utilities Protection Service (OUPS). Underground gas lines, power lines, communication cables, water lines, and other utilities can lie at various depths below the surface of the area marked for excavation. Call OUPS at 8-1-1 or 800-362-2764 at least two business days before you plan digging.



# RIGHT TREE, RIGHT PLACE.

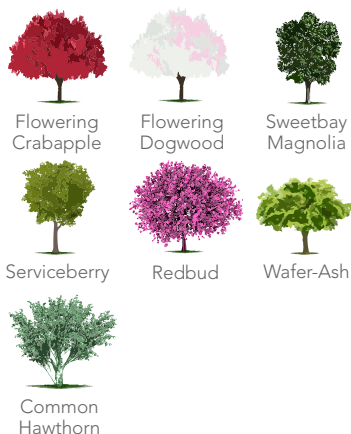


## TREE TYPES

The taller a tree will become, the further it needs to be from overhead lines.

### SMALL | <20 FT

If planting within 15 feet of power lines



### MEDIUM | 25-50 FT

Plant minimum 20 feet from overhead lines



### LARGE | 40+ FT

Plant 50+ feet away from overhead lines



## TREES NOT SUITABLE NEAR POWER LINES

Catalpa • Carolina Poplar • Silver Maple • Boxelder • Willow • Siberian Elm • Black Locust • Cottonwood  
Tree of Heaven • Mulberry • Elm species

**CONSIDER THE FOLLOWING WHEN SELECTING A TREE**

**HEIGHT.** Will it come within 10 feet of power lines when it's fully grown?

**CANOPY SPREAD.** How wide will the tree grow?

**GROWTH RATE.** A slow-growing species is typically stronger and lives longer than fast-growing species.

**SHAPE.** A columnar tree grows in less space. Round or V-shaped trees provide more shade.



## HOLMES-WAYNE ELECTRIC COOPERATIVE LOCAL PAGES

### Medical Awareness Certification form

Is someone living in your home with a medical condition that requires electrical assistance? If so, you must notify Holmes-Wayne by completing the form below to be added to or remain on our Medical Awareness list.

Holmes-Wayne Electric makes every effort to keep power flowing to all our members. Because of factors beyond our control, it always is our recommendation that you create a backup plan in case of a power outage. This may be as simple as having a small generator or another location to relocate to if such a case would occur.

All members who maintain up-to-date contact information are notified for planned outages for maintenance and repair.

For uncontrollable outages such as weather conditions or car accidents, power is restored through a safe and efficient remediation process.

Members on the medical list are given first consideration when individual line and/or meters are being restored. **The Medical Awareness Certification form must be completed on an annual basis.**



#### Holmes-Wayne Electric Cooperative, Inc. — Medical Awareness Certification

**If you or someone in your home is dependent on medical equipment operated by electricity, please provide the following information.**

Name \_\_\_\_\_ Account number \_\_\_\_\_

Address \_\_\_\_\_ Phone number \_\_\_\_\_

\_\_\_\_\_ Cellphone \_\_\_\_\_

**We request that the attending physician please complete and certify the following information.**

Equipment in use \_\_\_\_\_

Physician's signature \_\_\_\_\_ Date \_\_\_\_\_

**Return completed form in your next bill or to: Holmes-Wayne Electric Cooperative Inc.**

**Attn: Medical Awareness List**

**P.O. Box 112; Millersburg, OH 44654**

**Fax: 330-674-1869 • Email: [newmember@hwecoop.com](mailto:newmember@hwecoop.com)**



Holmes-Wayne  
Electric Cooperative, Inc.

A Touchstone Energy® Cooperative



#### CONTACT

866-674-1055 (toll-free)

[www.hwecoop.com](http://www.hwecoop.com)

#### OFFICE

6060 St. Rte. 83

P.O. Box 112

Millersburg, OH 44654-0112

This institution is an equal opportunity provider and employer.

#### BOARD OF TRUSTEES

Randy Sprang  
Chairman

Dave Mann  
Vice Chairman

Barry Jolliff  
Secretary/Treasurer

Jonathan Berger  
Bill Grassbaugh  
Jackie McKee

Ronnie Schlegel  
David Tegtmeier  
Chris Young  
Trustees

Glenn W. Miller  
President/CEO

#### SMARTHUB

Report an outage, submit a meter reading, and pay your bill all through our mobile SmartHub application.

Available for both Android and Apple devices



#### CALL US 24/7

Report outages, submit meter readings, and make payments

Text an outage to 55050 with the word "outage."

[Facebook.com/holmeswayneelectriccoop](https://www.facebook.com/holmeswayneelectriccoop)