

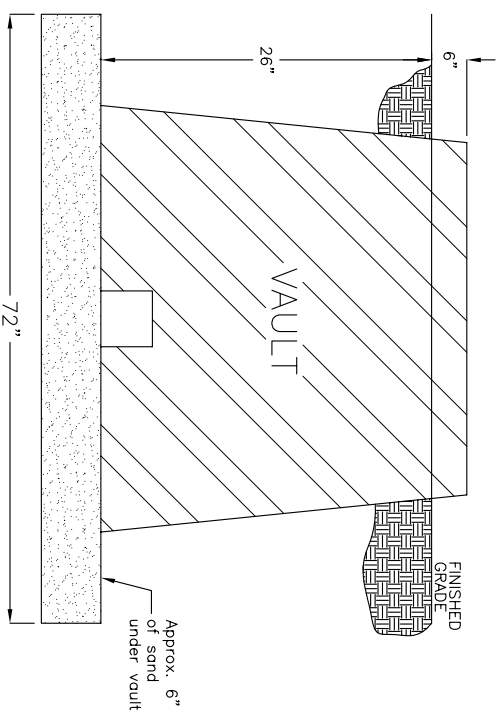
Vault Installation:

Excavation:
 Excavate the area approximately four to six inches deeper than suggested burial depth in order to allow for back filling with loose impeditment material.

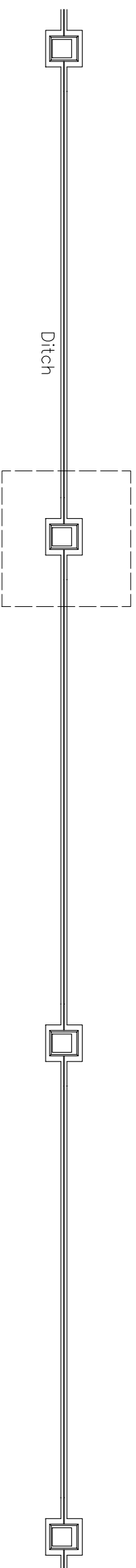
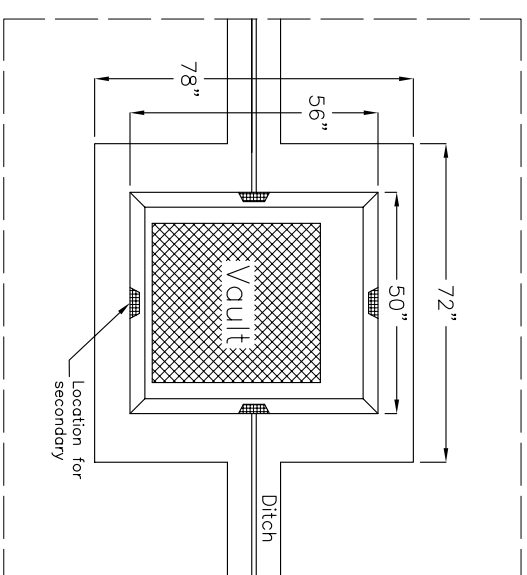
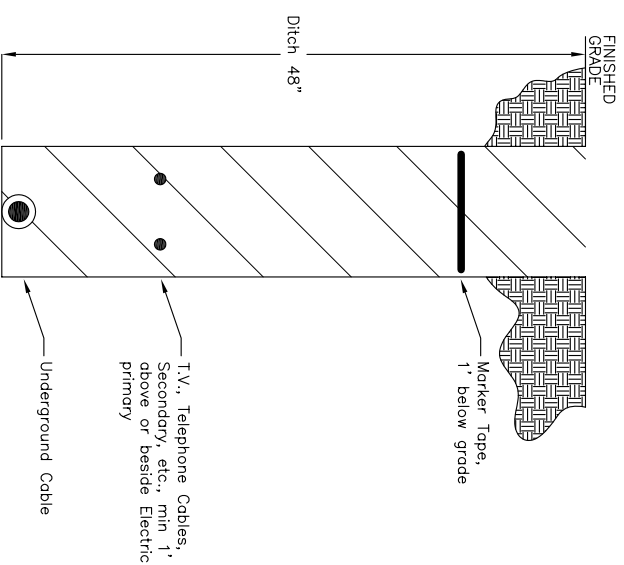
Base Material:
 Add approximately four to six inches of sand and then compact this material by hand or machine.

Installation:
 Place the vault in position. Allow the vault to be exposed 4-6 inches above finished grade line for any unexpected grade changes.

Back-filling:
 Back-fill with loose material. Do not back-fill with frozen chunks or large rocks next to the vault. Pack the back-fill by foot. Hydraulic tamping is not recommended.



DITCH



Road

